

# School Community & Neighbourhood Leaflet

## Harold's Cross Road School Zone, Harold's Cross, Dublin 6W

**13<sup>th</sup> November 2023**

Dublin City Council, with the support of the National Transport Authority, proposes to implement School Zone front-of-school works to improve the safety of students and vulnerable road users accessing and exiting schools at Harold's Cross Educate Together Schools and St. Clare's Convent Primary School on Harold's Cross Road, Harold's Cross, Dublin 6w.

### What are School Zones?



School Zones are built infrastructural upgrades that are designed to give priority to students at the school gate by freeing up footpaths and reducing vehicle drop-offs, pick-ups and idling. The aim is to increase safety at the front of school and prioritise active travel (walking, cycling, wheeling and scooting) to and from school.

*Image 1: Example of School Zone at Star of the Sea School, Sandymount, Dublin 4*

School Zones are implemented around the world in order to:

- Increase student safety
- Reduce vehicle drop-offs, pick-ups and idling outside the school gate
- Reduce congestion and prioritise active travel (walking, cycling and scooting) to and from school
- Encourage slow, safe driving in the area of the school
- Promote considerate parking
- Reduce emissions and pollution, and improve air quality and noise quality by reducing volume of traffic at schools and vehicles with engines idling

### Where will these works take place?

These works will take place on Harold's Cross Road outside of Harold's Cross Educate Together Schools and St. Clare's Convent National School.

## School Community & Neighbourhood Leaflet

### Harold's Cross Road School Zone, Harold's Cross, Dublin 6W

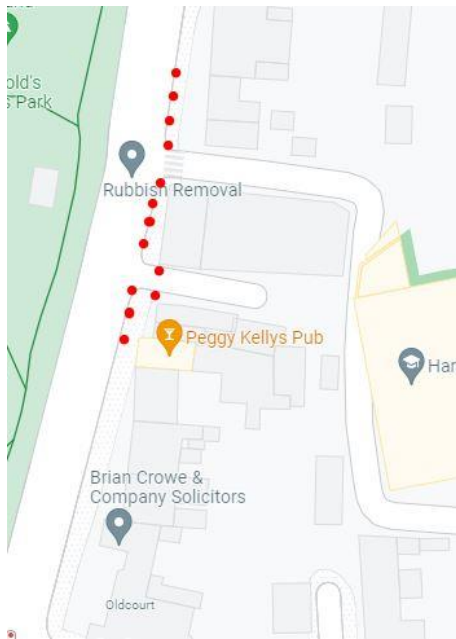


Image 2: Extent of the works at Harold's Cross Educate Together Schools



Image 3: Extent of works at St. Clare's Convent National School

#### What works will take place at Harold's Cross Educate Together Secondary School?

The works will consist of:



Rigid **yellow pencil bollards** on the footpath along the edge of the eastern footpaths within the Educate Together School Zone area and on the eastern and western sides of Harold's Cross Road at St. Clare's Convent. Pencil bollards are depicted as pink dots on the design drawing.

All residential entrances will remain unobstructed.

Image 4: Example pencil bollard on footpath, Cromcastle, Kilmore, Dublin 5

## School Community & Neighbourhood Leaflet

### Harold's Cross Road School Zone, Harold's Cross, Dublin 6W

**Colourful road markings** consisting of yellow, orange and red circles painted directly on the road at entrance to St. Clare's Convent National School and Harold's Cross Educate Together Secondary School.



Image 5: Example circle road surface markings, Thornville Rd, Kilbarrack, Dublin 5



**'School Zone' road surface signs** will be painted on approach from both northern and southern routes at both schools. This is to advise motorists they are in a School Zone and to drive accordingly.

Image 6: Example Road Surface Sign for School Zone, Leinster Road, Rathmines, Dublin 6

New **'School Ahead' with flashing amber signs** will be installed on Harold's Cross Road on both sides of the road on approach to both schools. This is to advise motorists they are in a School Zone and to drive accordingly.



Image 7: Example School Ahead Flashing Amber Sign

## School Community & Neighbourhood Leaflet

### Harold's Cross Road School Zone, Harold's Cross, Dublin 6W

#### Why are we implementing this School Zone?

Traffic related safety concerns have been reported and observed by the schools, parents, Dublin City Council's School Warden Service, Parking Enforcement and School Mobility Officer, including:

- Illegal vehicular parking on cycle and bus lanes endangering cyclists
- Increased volumes of traffic on the road
- Speeding and high volume of traffic on Harold's Cross Road

#### Share your thoughts from 17<sup>th</sup> November 2023 to 30<sup>th</sup> November 2023

If you would like to share comments or thoughts on these works please contact us via:

- **Online survey:** <https://consultation.dublincity.ie/> (search Harold's Cross) has all of the details listed here as well as a portal through which to give feedback
- **Email:** [sustainablemobility@dublincity.ie](mailto:sustainablemobility@dublincity.ie) (with Harold's Cross in the subject bar).
- **Phone:** Customer Services Desk 222 2222 they will refer you to an available member of the School Mobility team.
- **Postal Address:** School Mobility Programme, City Centre Transport Projects, Block 2, Floor 7, Civic Offices, Wood Quay, Dublin 8, Ireland, D08 RF3F.

This period of non-statutory consultation closes at midnight on 30<sup>th</sup> November 2023.

#### What happens next?

After the public consultation we will review all the comments and observations and, where appropriate, make required changes to the design. Works will then be scheduled for installation.

For the School Zone front-of-school treatment to work effectively, parents who need to drive must be willing to change their drop off and pick up habits. **Parents and guardians will be encouraged not to collect and drop off within the School Zone.** They must park respectfully and legally outside of the School Zone by not blocking other entrances, mounting footpaths or double parking.

Full drawings are available to view in hard copy poster form at the schools or online at <https://consultation.dublincity.ie/> (search Harold's Cross Educate Together Secondary School).



# School Community & Neighbourhood Leaflet

## Harold's Cross Road School Zone, Harold's Cross, Dublin 6W

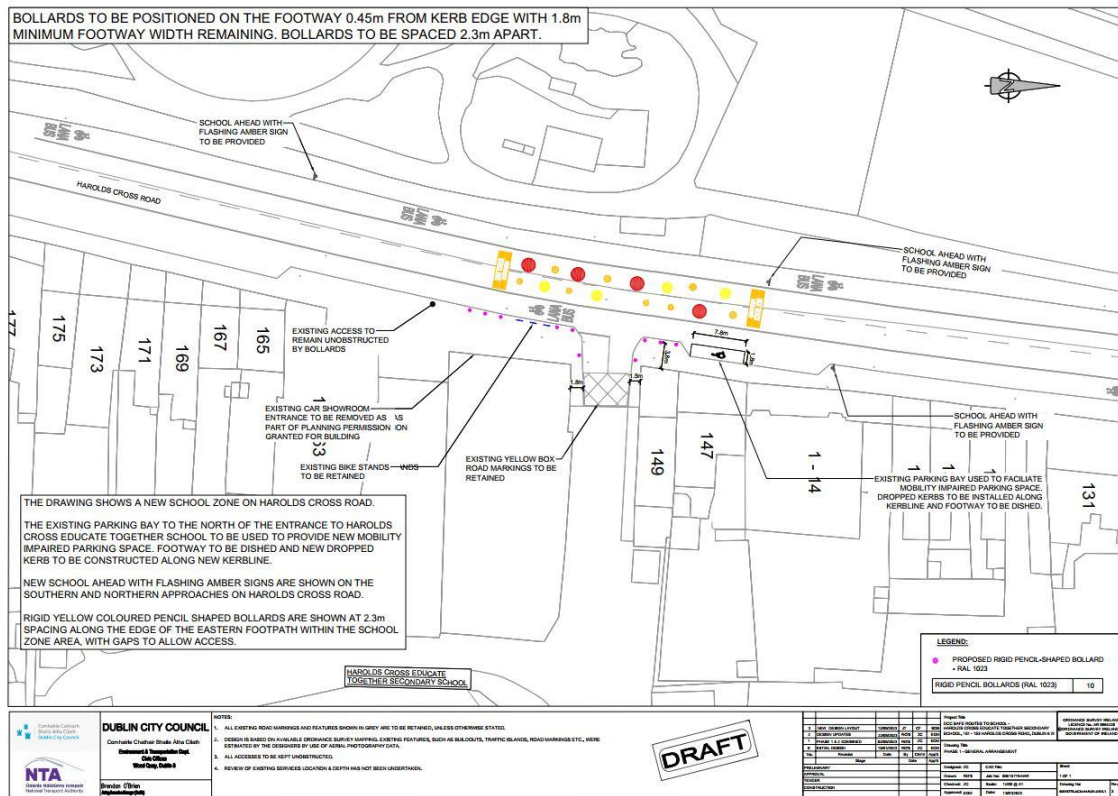


Image 8: Snippet of design drawings for Harold's Cross Educate Together Schools

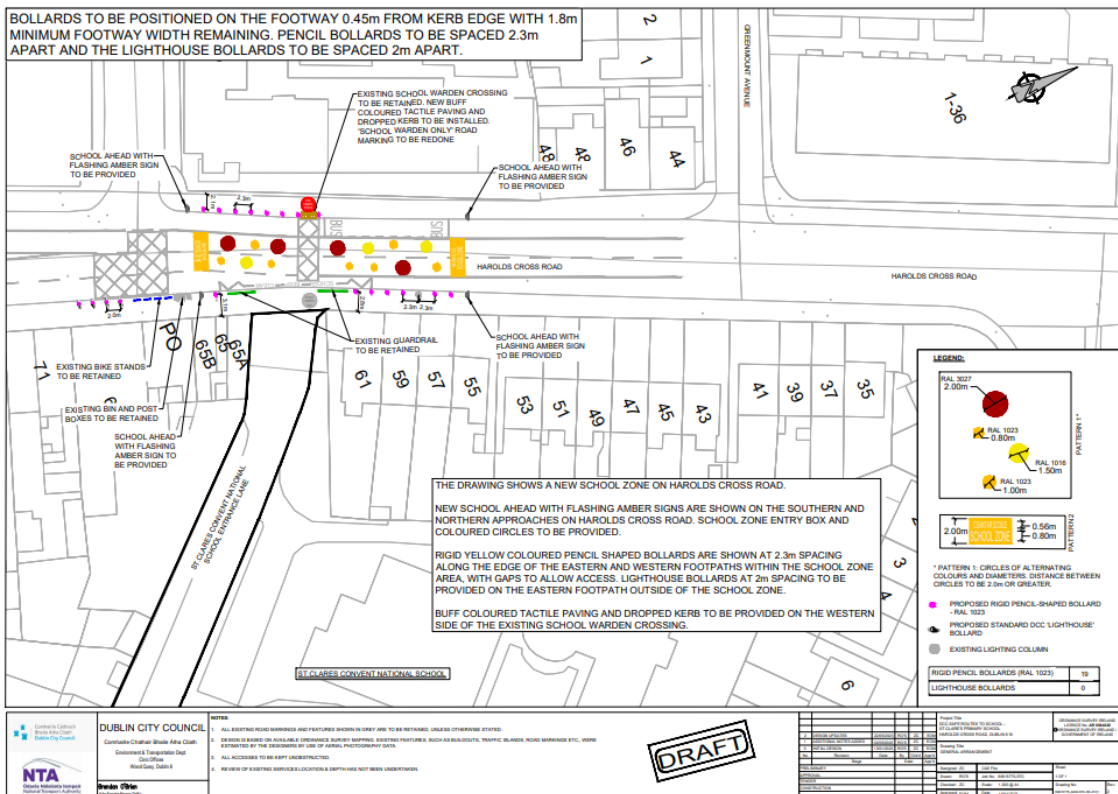


Image 9: Snippet of design drawings for St. Clare's Convent National School